

SUNGLASSES FOR WOMEN



6

Lightweight materials, minimalist designs and soft tones are the cornerstones of the Silhouette Sun Collection 2015. A highlight is the Titan Minimal Art Ultra Thin (6) – weighing just 7.88g and featuring advanced and extremely thin protective lenses that are uniquely curved.

The name says it all for this new sunglass model for women from the Blackfin Zero Edge range. Model BF715 Magnetic (7) encapsulates the very essence of this 100 per cent Italian, titanium eyewear brand: style, design, research and innovation. The angular curves of the front contrast with the taut arc that divides the lenses with a different mirror-finish.



7

Maui Jim's first ultra-luxury sunglasses collection, You Move Me (8), offers colourful interpretations of Hawaiian flora and fauna brought to life by Hawaiian Artist, Charlie Lyon. Lyon's work has been transferred onto limited-edition pairs of sunglasses evocative of the Maui Jim lifestyle.



8

The Ocean Blue collection features luxurious, elegant models adorned with precious stones and intricate metal designs utilising the finest hand-made Italian materials. Sail into 2015 with Ocean Blue 9170 – the collection's signature piece (9) available in opulent pearl.



9

Why settle for a single eyewear decoration when you can have two in the same frame? Thanks to the application of double layers of high definition acetate, the new Double Image by Okia collection (10) creates surprising multi-layered patterns for a truly unique 3D look.

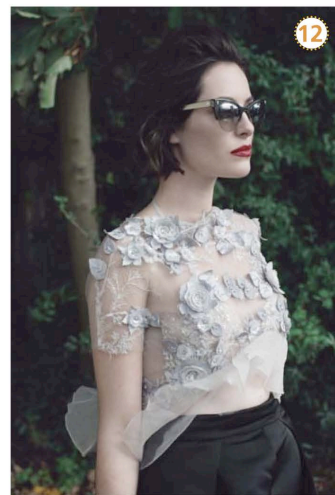


10

The 2015 Dakota collection captures this year's High Street trends. Model 8144 (11) is a colourful ladies acetate style possessing a trend inspired deep eye shape for statement styling. It's available in a fun and bold colour option of Pink Striation with contrasting turquoise temple trim.



11



12

The Kirk & Kirk debut sunglass collection, Solarium, is comprised of four acrylic shapes in six metallic colours and uses beautiful, graduated mirror lenses. As with the ophthalmic collection, Vivarium, there is a choice of animal sterling silver or gold pins, alongside the classic modernist pins. Model Eleanor is pictured here (12).